



RESIDENTIAL ESTATE AGENTS
PROPERTY LETTING & MANAGING AGENTS
VALUERS & PROPERTY CONSULTANTS
CHARTERED SURVEYORS

01722 336422
www.hwwhite.co.uk WEB



Winchester Street, Salisbury

£1,100 PCM

47 Winchester Street, Salisbury, Wilts, SP1 1HG



Energy Efficiency Rating		Current	Potential
Very energy efficient - lower running costs			
(92 plus) A			
(81-91) B			
(69-80) C			
(55-68) D			
(39-54) E			
(21-38) F			
(1-20) G			
Not energy efficient - higher running costs			
England & Wales		EU Directive 2002/91/EC	

Set within a Grade II listed building in the heart of Salisbury, this well-presented two-bedroom ground floor flat offers well-proportioned accommodation, just a short walk from Salisbury Guildhall Square. Recently redecorated and fitted with new carpets, the property retains its period features while offering a clean and updated interior.

Set within a Grade II listed building in the heart of Salisbury, this well-presented two-bedroom ground floor flat offers well-proportioned accommodation, just a short walk from Salisbury Guildhall Square. Recently redecorated and fitted with new carpets, the property retains its period features while offering a clean and updated interior.

The accommodation comprises a spacious open plan sitting room and kitchen, featuring large windows, and a feature fireplace. The kitchen is equipped with a double electric oven, ceramic hob, and a fitted fridge/freezer. There is a generous master bedroom with an en-suite bathroom including a shower over bath, alongside a second double bedroom and a separate shower room.

Additional benefits include a dedicated space for a washer and dryer, ample storage throughout, and one private allocated parking space. The property also has an outdoor patio area to the front with private access via the front door, as well as secondary access to the rear with an intercom system. Offered unfurnished, the property has an EPC rating of D and is available from 08/06/2026.

A Note From the Whites Letting Team

Thank you for considering Whites as your letting agent. As a proud member of the Royal Institution of Chartered Surveyors (RICS), we strive to uphold its core values by providing a fair, efficient, and transparent service to all prospective tenants. Below, we outline how we manage property inquiries and applications to help set expectations and guide you through the letting application process.

To start the process of inquiring about one of our properties, please click the 'Request Further Details/Info' button on the property listing.

If you are interested, please contact us as soon as possible.

Once we receive your enquiry, we will contact you about the property.

Due to the high demand for this property, we advise you to apply as soon as possible to secure the property.

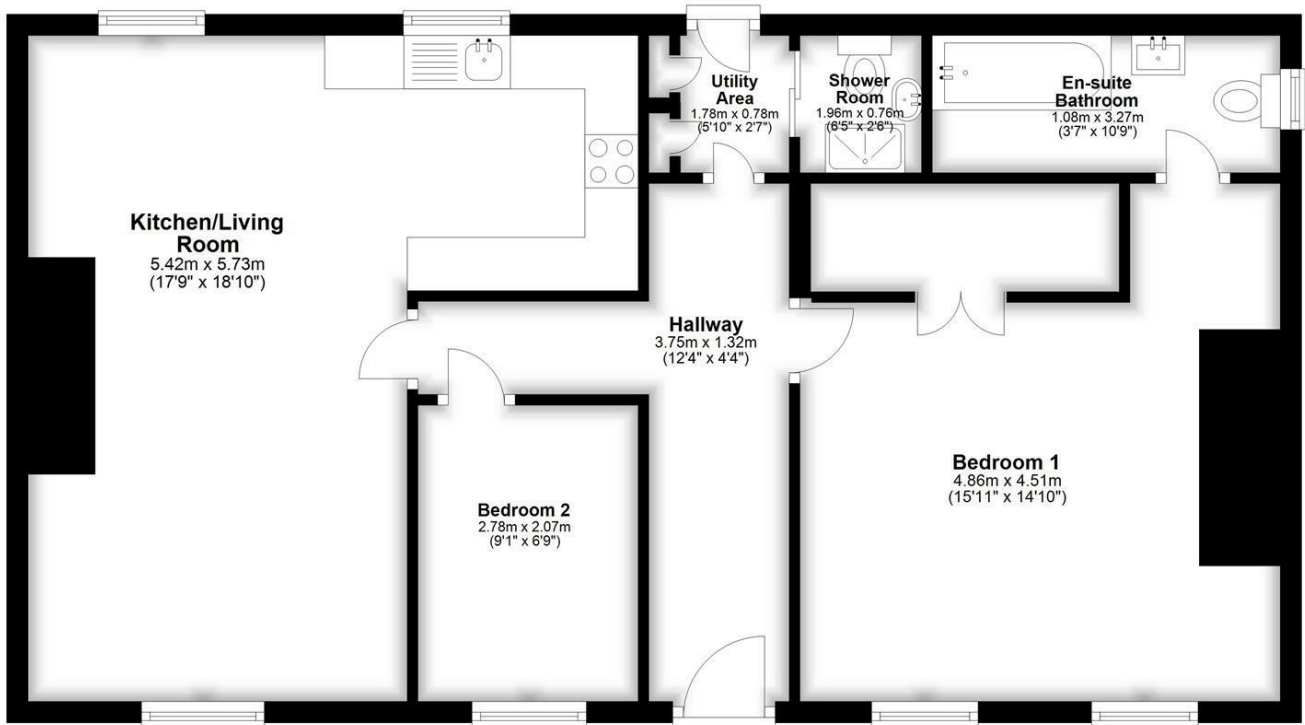
as

about

if up to our

Ground Floor

Approx. 69.0 sq. metres (742.3 sq. feet)



Total area: approx. 69.0 sq. metres (742.3 sq. feet)



01722 336422

47 Castle Street, Salisbury SP1 3SP 01722 320600 FAX
residential-sales@hwwhite.co.uk E.MAIL www.hwwhite.co.uk WEB